

# St. Michael and All Angels Episcopal Church Annual Ministry Report

Casa  
M San Miguel Food  
Pantry



Open Tuesdays    Abierto los martes    8:00—10:00 AM

Ministry Leaders  
Jake Van Der Geest  
Robert Duffield

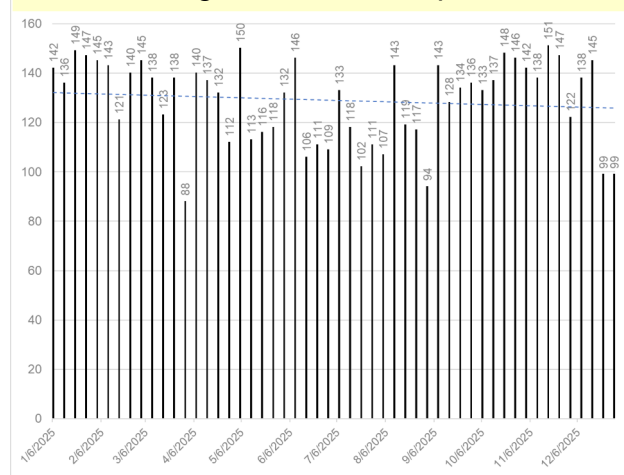
January 25, 2026



# Feed the hungry: Matthew 25:31-46

- Food insecurity persists
- We have reached our maximum capacity to serve (as defined by our current configuration); lately, we reluctantly turn people away on a regular basis

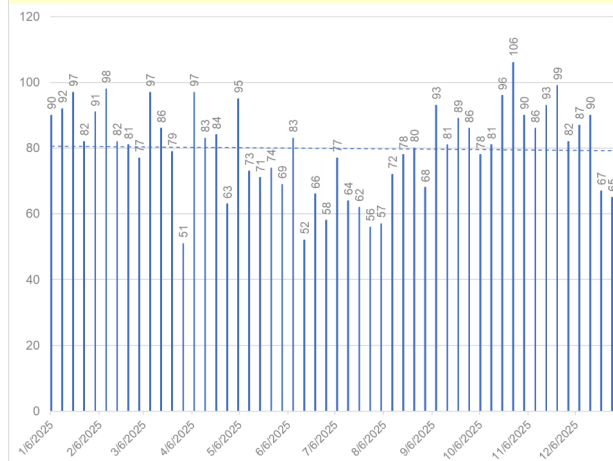
129\* Wagons Distributed per Week



Total in 2025: more than 6,700

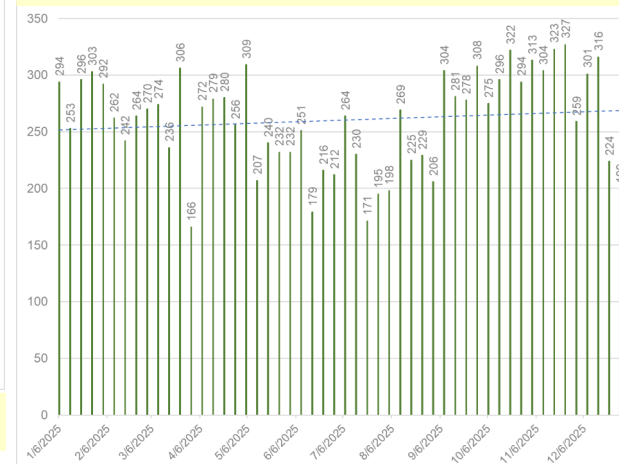
\* These are annual averages

80\* Households Fed per Week



Total in 2025: more than 4,100

260\* Individuals Fed per Week



Total in 2025: more than 13,500

# Jake Van Der Geest - Leader

- After years of leading the Food Pantry, Jake is taking a step back.
- From RoadRunner interface to literally carrying water around to people, Jake made everything run and feeding people to our capacity.
- We hope to keep things working with 5 or 6 people cooperating to do Jake's work.
- Rev. Angel Nalubega is our clergy representative at St. Michael and All Angels Episcopal.



- Casa San Miguel (CSM) provided food for *The Landing*
  - The level of activity at *The Landing* is currently limited to occasional guests (*e.g.*, Navajo Nation visitors obtaining medical treatment)
- Historical partners like Las Familias Solidarity and FaithWorks are not currently active



# In the community ministry . . .

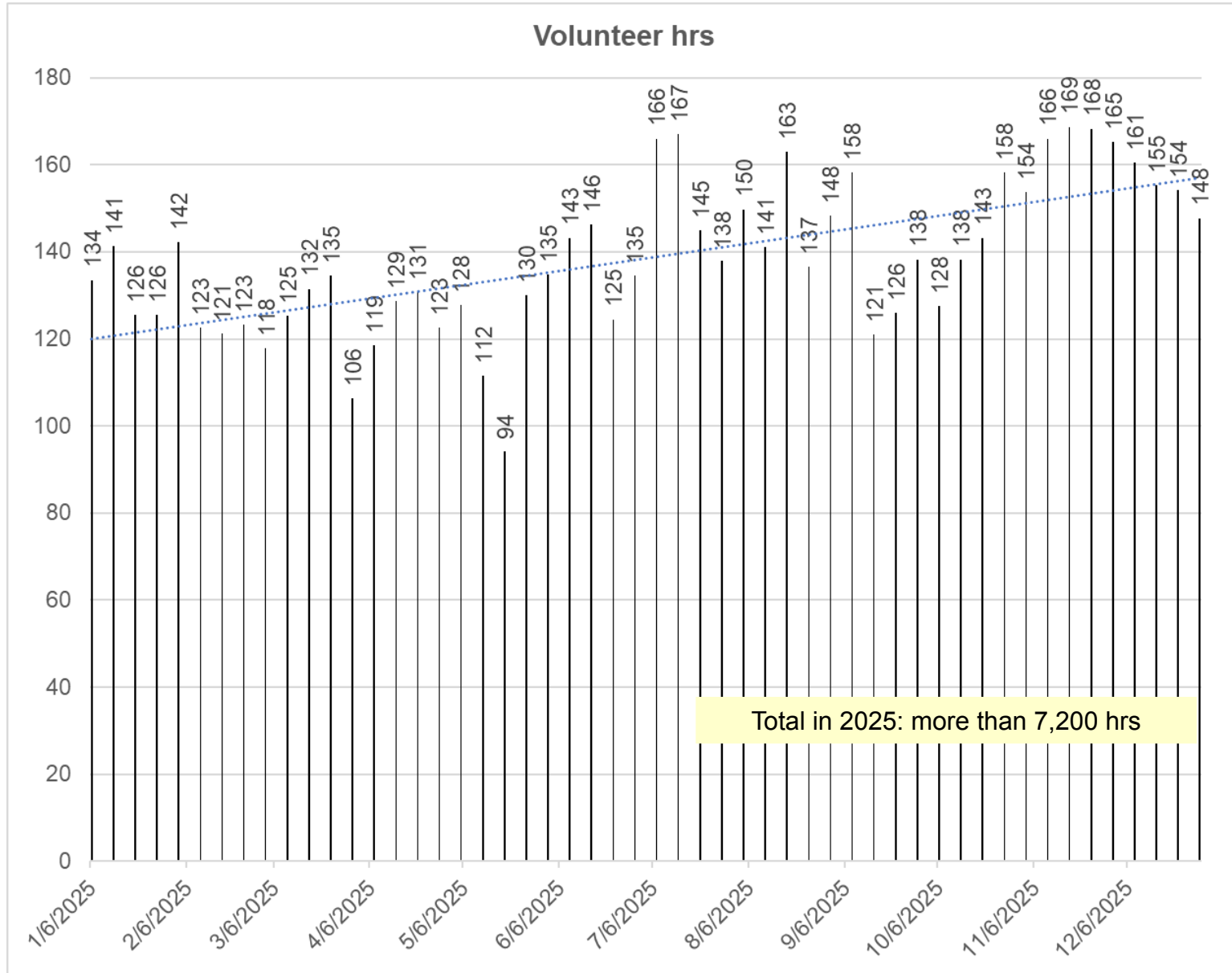
- CSM clients need nourishment for their bodies and their spirits during very difficult times. Some have shown their gratitude and appreciation for CSM in different ways.
- “I love working with our clientele. It’s an adrenaline high from the heart to work distributing food on Tuesday.”
- Some Clients are also volunteers

# Volunteers

- As the number served has increased, the ministry leaders have made requests for more volunteers.  
**The parish response has been awesome!**
- Chart and trendline on next page
  - 2025: averaged 139 volunteer hrs/week
    - Average Monday crew is about 15
    - Average Tuesday crew is about 25
    - Weekly transportation crew is 7
    - More than 70 people are on the CSM volunteer contact list (including a handful of non-SMAA folks)
    - More than 70 individuals volunteered in 2025



# Weekly Volunteer Hours





Typical Monday volunteer crew

01/17/2026



# Monday Transitions

A pallet of apple boxes becomes



The walk-in cooler starts like this ...



... and ends like this – even the space Victoria is standing in is filled (7' L x 12' W x 7' H)

# Monday Activities

- Receive Roadrunner Food Bank (RRFB) delivery
- Receive rescue food from Sprouts and Smith's picked up by our transportation teams
- Load 144 bags and 144 boxes with non-perishable food for Tuesday distribution
- Organize to ensure smooth Tuesday distribution
- Purchase toiletries from Dollar Tree

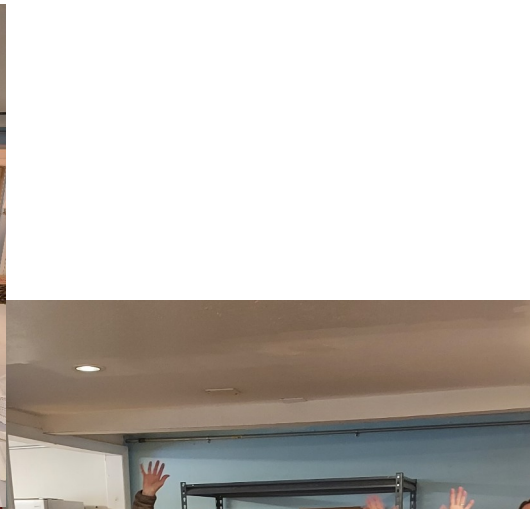


01/17/2026



10





This is about half the 144 bags set-up by the Monday crew, consisting of non-perishable items like rice, beans, pasta, peanut butter, soup, vegetables, fruit, cereal (one bag per wagon)





Typical Tuesday volunteer crew

01/17/2026



# Tuesday Activities

- We start each distribution with prayer and have fun together all morning even though it's lots of work
- Check-in clients in Roadrunner database
- Register new clients (in 2025, CSM registered 800+ new TEFAP participants)
- Distribute food in drive-thru manner
  - Small family (1 to 3 people) receives 1 wagon (about 70 lbs)
  - Larger families:
    - 4 to 6 people receive 2 wagons (about 140 lbs)
    - 7 to 9 people receive 3 wagons (about 210 lbs), etc.







It was a balmy 5 °F this morning, only the frozen meat was warming up





# Traffic team

- A new approach to control traffic was needed:
  - The main parking lot was full before we opened and traffic was backed up past the AAEDS entrance on Montañó
    - Not safe for our Clients
    - Lots of frustration
    - You're doing something right when you need 4 people to manage traffic!
  - Main lot overflow is in the east gravel parking lot
    - Walkie talkie communication allows the team to direct cars, in the order they arrived, over to the main parking lot
    - Since we started exceeding our 144 wagon capacity, we count in the parking lot and refer folks to other food pantries – nothing would be worse that waiting 2 hours and receiving no food
    - If we must turn people away due to food supply limitations, we send them with several items of which we have extras and tell them they can return next week







Sunday offering: Your donations of shopping bags (paper and plastic), egg cartons, and food (more than 7,600 lbs in 2025) are greatly appreciated. CSM sets up 144 dozen eggs and 144 bags of food per week.

# Growing Partnerships Make it Happen

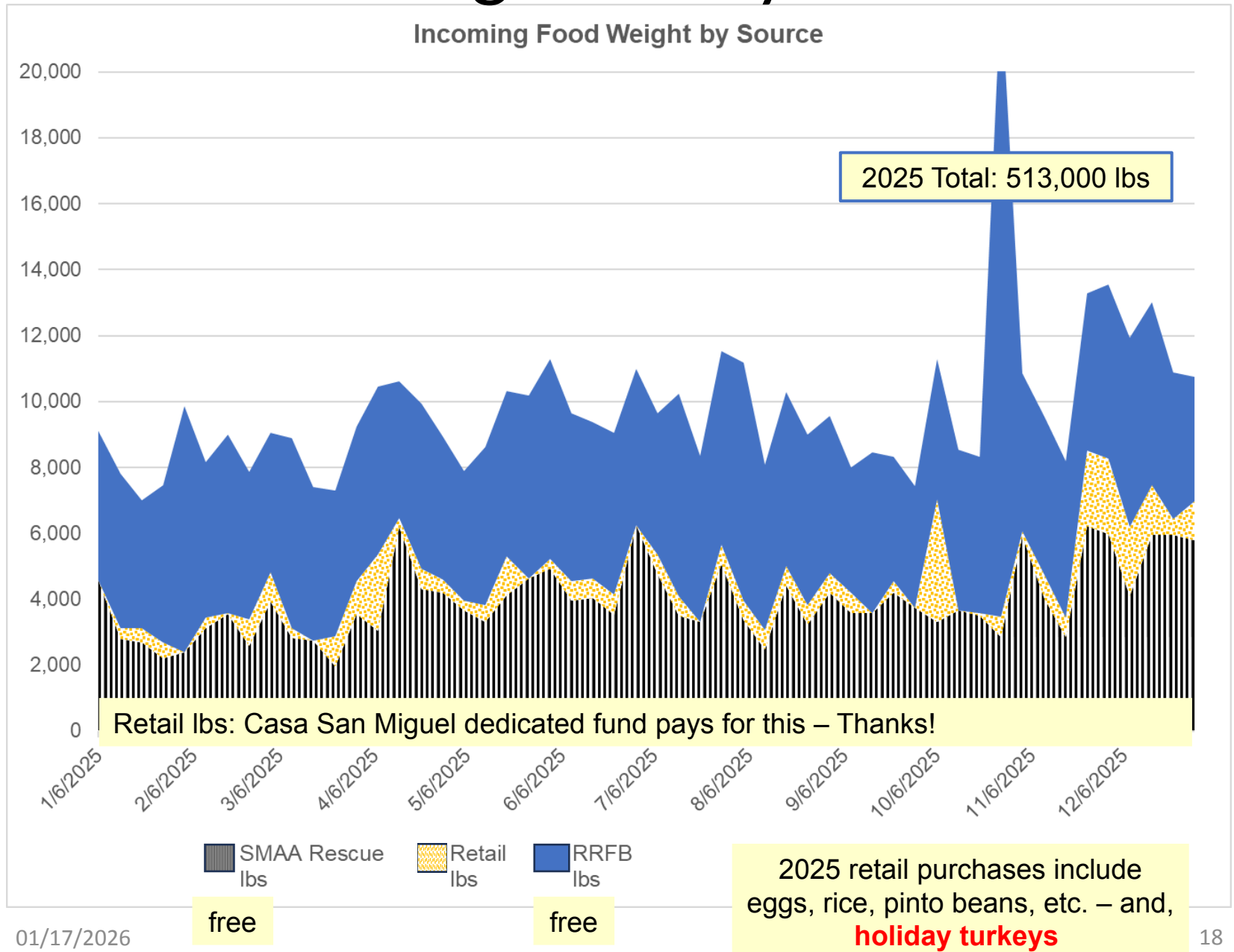


- RRFB – Grants for refrigerators and the walk-in cooler, and Food Rescue from Smith's and Sprouts
- Adelante/Desert Harvest Food Rescue from Sprouts and extra holiday pick ups
- The Rock at NoonDay kitchen, Dismas House (90-day living program for motivated men on probation or parole), Jefferson and Taylor Middle Schools, Pajarito Elementary School, and Nativity of the Blessed Virgin Mary Catholic Church
- Foundation for Sustainable Living

01/17/2026



# Incoming Food by Source





# Transportation

## Roadrunner delivery



Record for wagon loads in a carpooling vehicle – the number of stickers is the number of households (5) and the sum of the count is 15 wagons (1000+ lbs)



# Good Stewards

- General Operating only pays utility bills and provides accounting support
  - Casa San Miguel dedicated account financials are included in the Treasurer's report
- Transportation teams donate gas and time for:
  - Food (over 239,000 lbs – retail purchases, store rescue, and Sunday offerings)
  - Personal hygiene supplies
- Other than custodial work, it's an all-volunteer effort to manage the ministry, order and pick up food, receive shipments, and distribute food (no paid staff, which helps attract foundation grants)





Thank you  
partners,  
volunteers, and  
St. Michaels,  
and most especially  
**Jake!!**



# Opportunities and Contact

- We greatly appreciate your continued support and always welcome new volunteers
- Contact Robert at 505-252-2036 with questions